



РУССКАЯ АРКТИКА
национальный парк

**Preservation of Historical Monuments
as a Marker of Changes in Climatic Conditions
in the High-Latitude Arctic
on the Example of Franz Josef Land**





Земля
Франца-Иосифа

Новая
Земля

THE NATIONAL PARK
CONSISTS OF
TWO CLUSTERS

Northern Cluster

Franz Josef Land

is a group of **192 islands**; the largest are George Land, Graham Bell, Alexandra Land, Wilczek Land.

The archipelago extends **375 km from west to east** and **234 km from north to south**. Total land area is **1,609 thousand hectares**, the water area is **5,751 thousand hectares**.



Southern Cluster

Northern part of Severny Island of **Novaya Zemlya**, Greater Orange and Lesser Orange groups of islands, Heemskerck Island, Loshkin Island and a number of others.

Total land area is **632,090 hectares**, the water area is **793,910 hectares**.



SPECIALLY
PROTECTED NATURAL AREA



Arkhangelsk



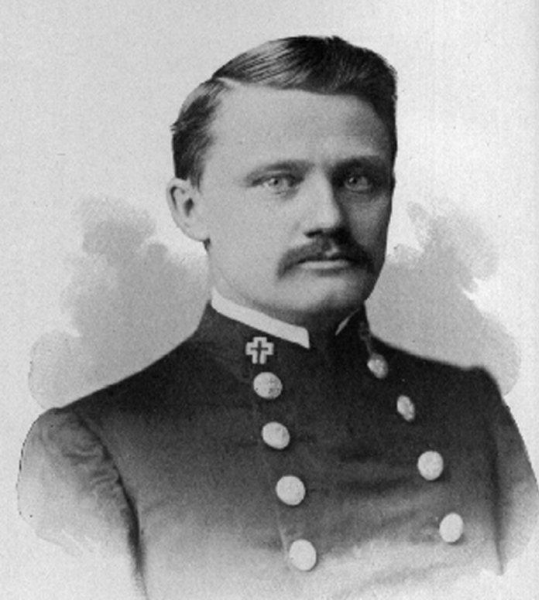
85% of the land is covered with glaciers

93 historical objects



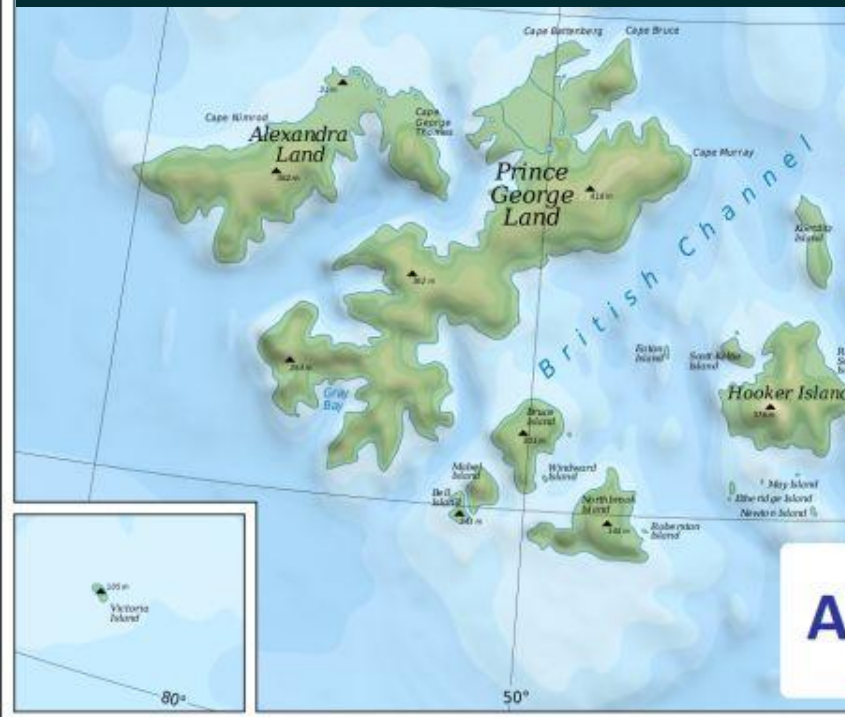
**For 30 years, 11 expeditions from 6 countries
have passed through Franz Josef Land**



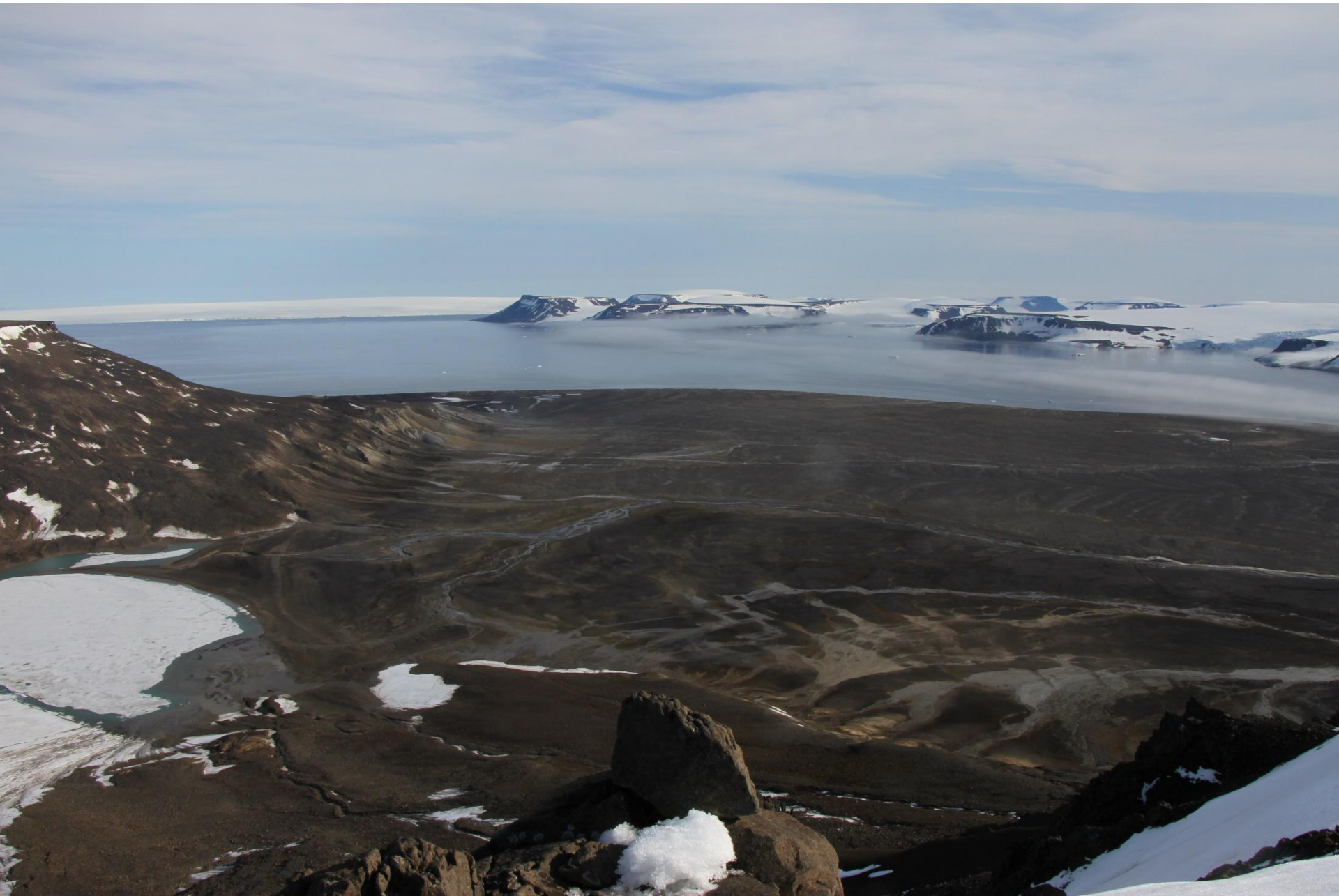


1901-1902
Baldwin Polar Expedition
42 people, 428 dogs, 15 Siberian ponies





Alger island





Camp Ziegler







2012



2018



2021



1901



2018



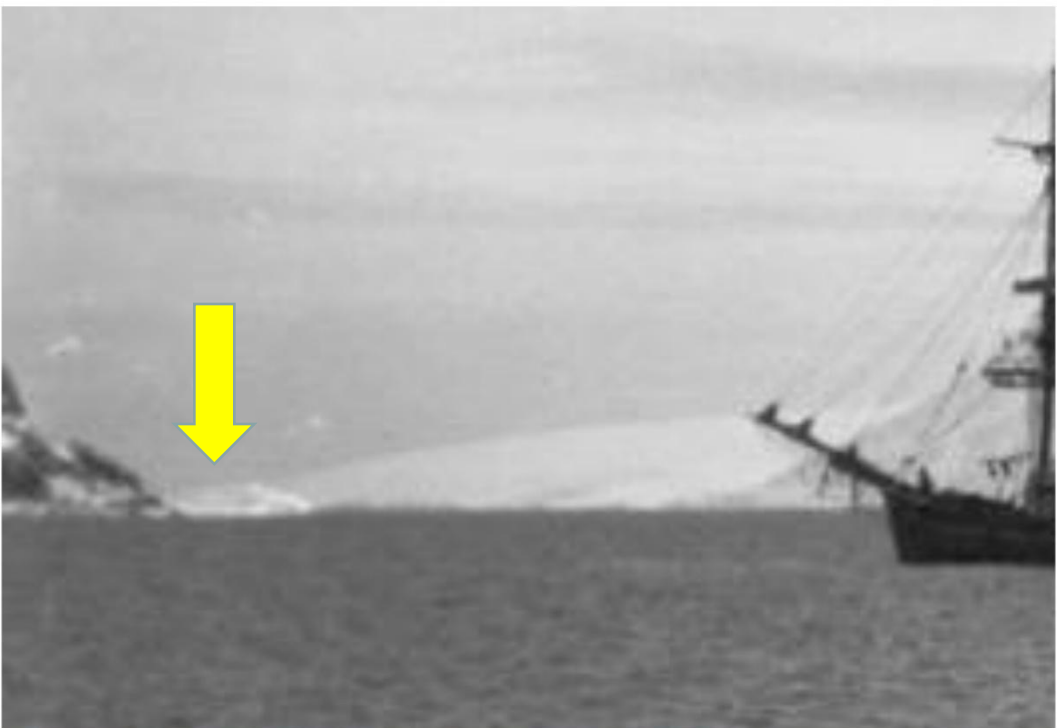
1901



2018



1901



2018



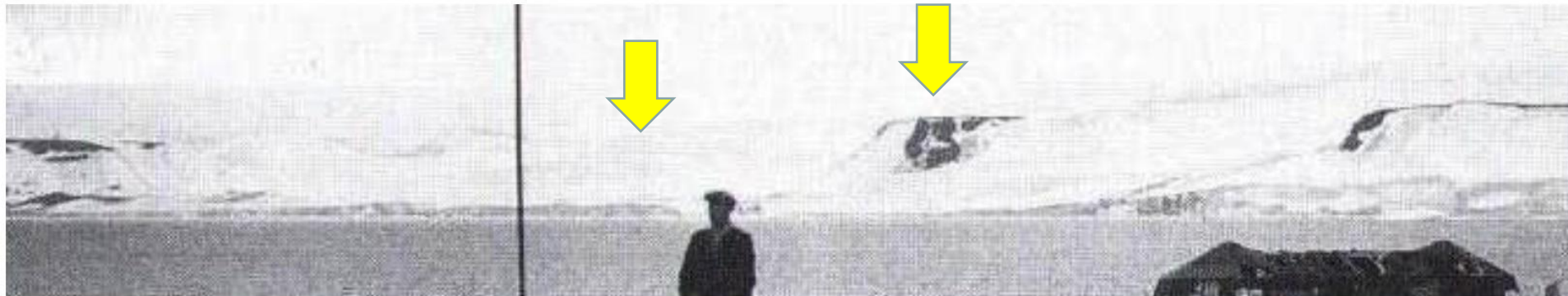
1930



2018



1930



2018

1958



2018





**Thank you for
attention!**