

5th Arctic Climate Forum (ACF-5)

Arctic Regional Climate Center – network (ArcRCC-N)

MAY 27-28, 2020

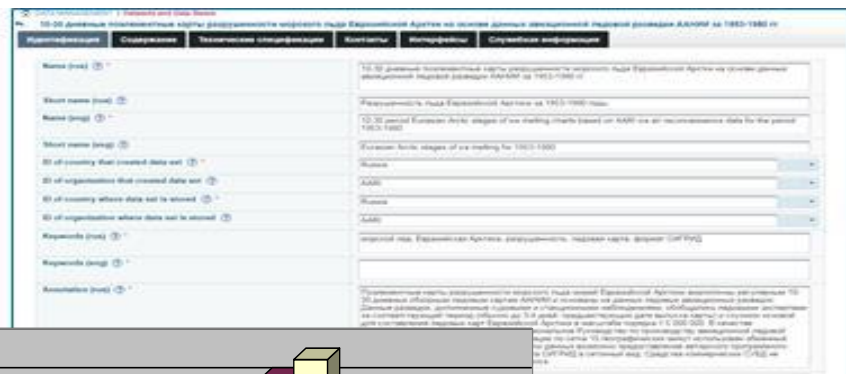
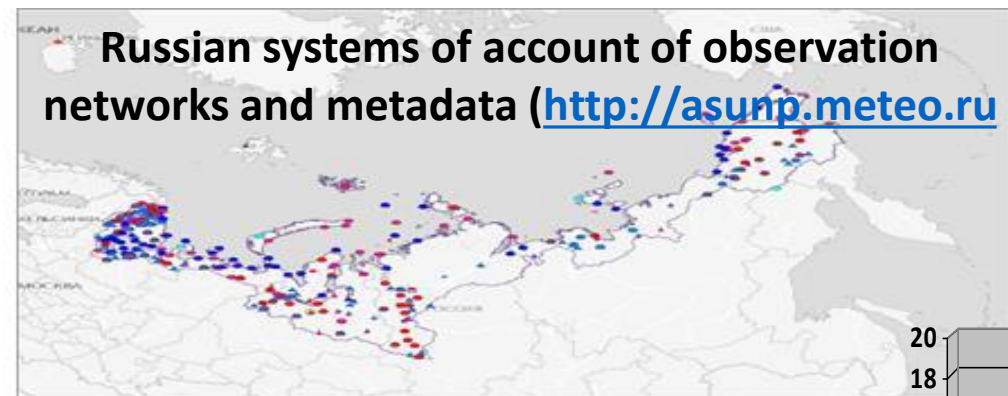
Using INTAROS project results for North Eurasia node: Access to seasonal summary data

Evgenii Viazilov, RIHMI-WDC

Assessment of Russian observing systems and databases

<http://portal.intaros.meteo.ru/portal/intaros/meta>

Russian systems of account of observation networks and metadata (<http://asunp.meteo.ru>)



Observing networks metadata

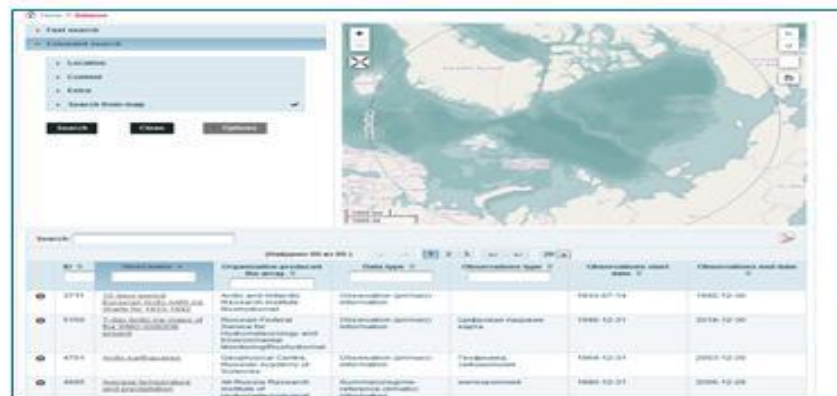
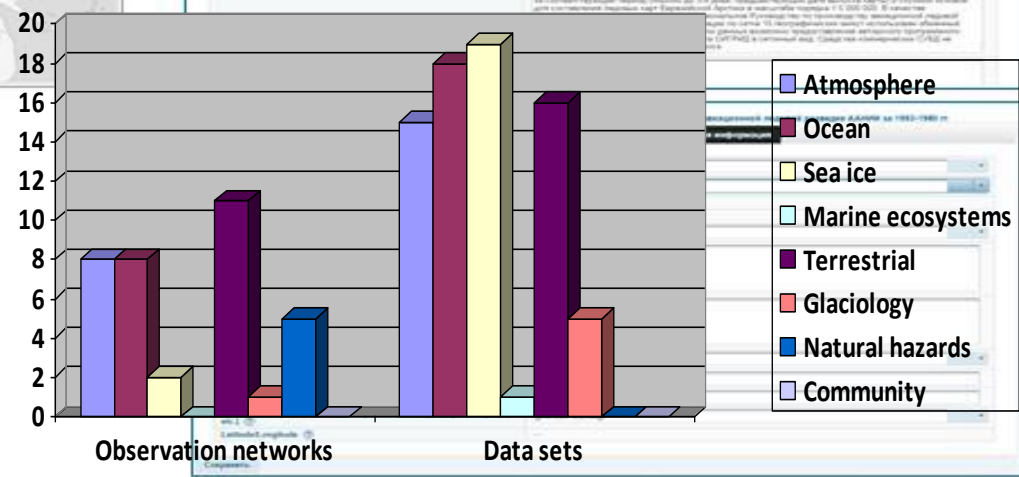
Data bases (sets) metadata



Observing Network assesment

INTAROS questionnaire (A, B, C)

Users



Integration of multidisciplinary, distributed and heterogeneous databases within iAOS-Russian Node

DATA <http://portal.intaros.meteo.ru/portal/intaros/data>

Short information:

The screenshot displays the 'Resource Search' interface. On the left, there are search filters for Rubrics, Start/End Date, Geographical area, Availability Category, and Status. The main area shows a list of resources with details like 'Hazardous events and analyzes', 'Operational weather observation data', and 'Maps of mean annual salinity in the Kara Sea'. A blue arrow labeled 'Data' points to a map visualization of the Kara Sea. Another blue arrow labeled 'Metadata' points to a detailed metadata table for a specific resource.

ID	RU_RIHMI-WDC_3025
Title	Maps of mean annual wind speed over the Kara Sea
Description	GIS-layers with thematic maps of mean annual wind speed over the Kara Sea
Data quality information	
Datasource name	
Datasource id	RIHMI-WDC
Datasource storage type	Object data file
Additional information URL	• www.esimo.ru
Keywords	• Метеословия
Platform type	• Offshore structure, e.g. Oil Rig
Access constraints	Available for general disclosure

Total -226 information resources

RIHMI-WDC – 165

AARI – 59

Nansen Centre -2

Rubric

Meteo - 32

Data for river -13

Hydrochemistry - 7

Ice - 7

Function:

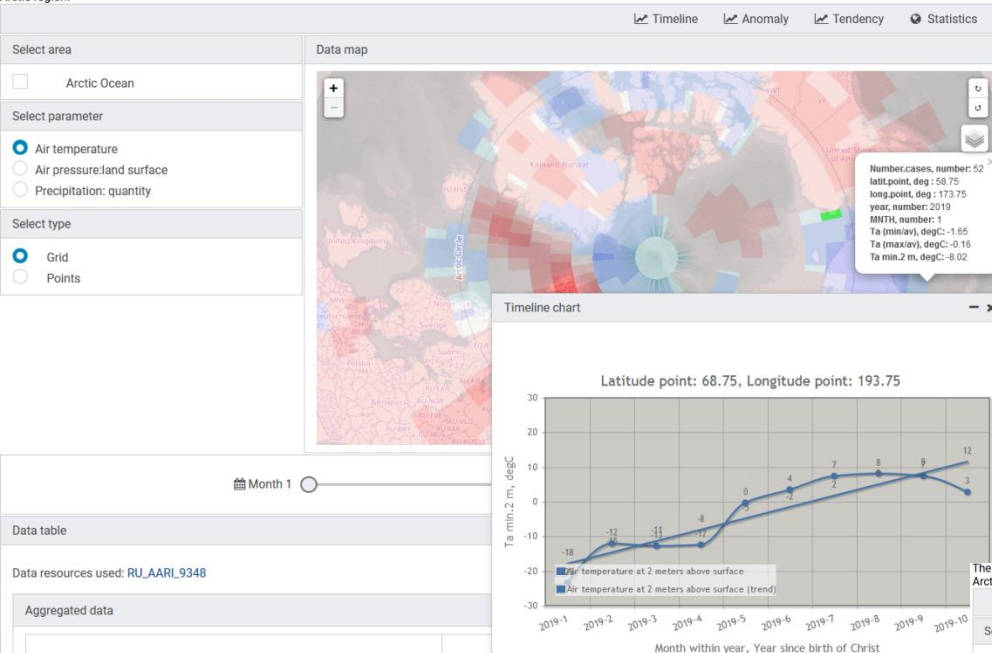
- integration data
- metadata access
- search information resources
- data access
- data exchange
- data delivery to ftp or e-mail
- visualization data (map, graphic, table)

Links “Data Access” on ArcRCC site <https://arctic-rcc.org>

iAOS applications for information support of marine activities in the Arctic

http://portal.intaros.meteo.ru/portal/intaros/services/climate_monitoring

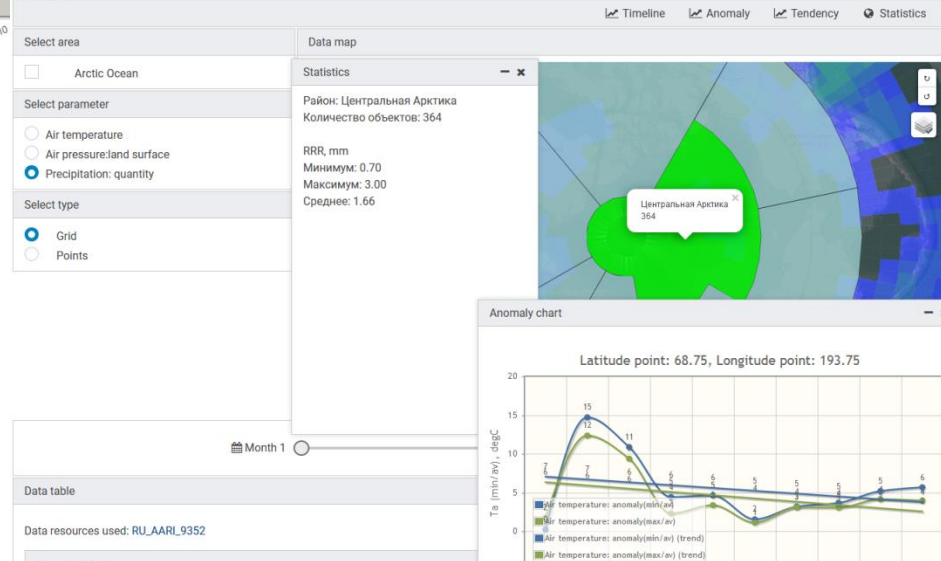
The service provides opportunities to assess the trends and dynamics of climatic changes in air temperature, pressure, precipitation, wind, ice and hydrological conditions in the seas of the Arctic region.



Applied tasks:

- Disasters and support decision
- Assessment of climate
- Monitoring of climate
- Support of Long-Range forecasts
- Hydrometeorological support of transport operations

The service provides opportunities to assess the trends and dynamics of climatic changes in air temperature, pressure, precipitation, wind, ice and hydrological conditions in the seas of the Arctic region.



Functions:

- Configuring information resources, portlets, tools, geo-area, parameters for applied tasks
- Calculation of anomalies, trends, rank, extrema, statistical characteristics by macro-regions
- Data visualization (map, graph, table)
- Preparation of materials for the report

THANK YOU FOR YOUR ATTENTION !

INTEgrated ARctic Observing System (INTAROS)

EC HORIZON 2020-BG-09-2016

Agreement between Ministry of Education and Science of Russia and
RIHMI-WDC № RFMEFI61618X0103

The participants of project:

- All-Russian Research Institute of Hydrometeorological Information - World Data Center (RIHMI-WDC)
- Arctic and Antarctic Institute (AARI)
- Nansen International Environmental Remote Sensing Center (NIERSC)